



Streptopelia decaocto

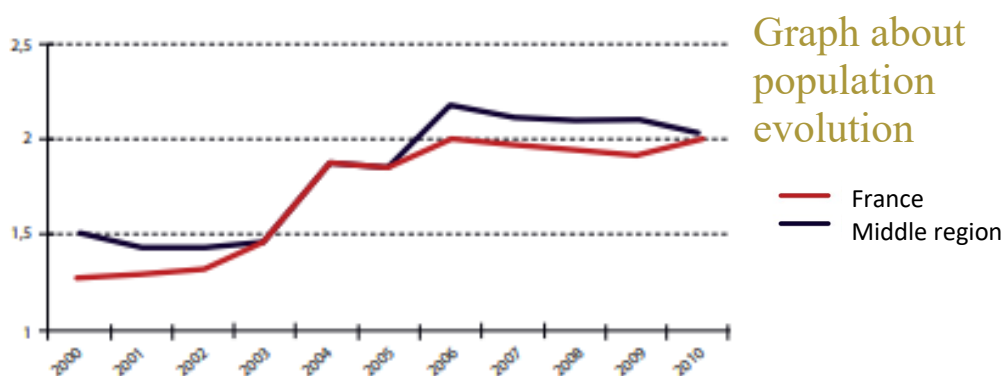
The most consistently used name of this bird is « collared dove ». there are no difference between male and female adulte. This bird has fairly uniform feathering with beige color. The plumage is darker on its back. This species has a half collar on the neck. And the head is light grey. The average weight of this bird is 150g.

This kind of bird doesn't migrate. But they are localised in a large zone. Since the beginning of the XXth century this bird has extended from Turkey to Europe. They are mainly living in urban and rural environment like around the farms or gardens.

The estimated population size in Europe around 60,000,000 to 110,000,000 individuals.

In Drôme the observation of collared doves is in the top 10 of most views with 190 observations a year.

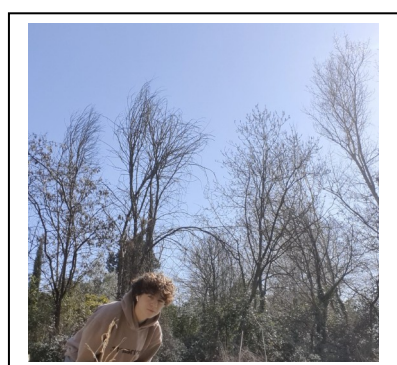
My observations have been done in a little forest, this one wasn't far from the city but enough to avoid the noise made by cars and others, for the bird not to be scared. Seven observations were made for 8 individuals observed.



The graph above is representing the evolution of population of collared dove. The X-axis represents time from 2000 to 2010 and the Y-axis represents the percentage of the bird evolution. We can notice that a population hasn't increased quickly from 2000 to 2002. But the following years, the population of this species has climbed faster than before and since 2004 the population of collared dove has remain constant. We can explain this increase, because that bird is living near and in cities. So they can feed and therefore they can breed easily.



Picture with wings spread



Myself in the place I saw the bird



Surroundings where I saw the bird

Click on the link below to access to the point of observation