

VOYAGE EURO ANGLAIS

LYON

MUR DES LYONNAIS, PRESQU'ÎLE ET
MUSÉE DES CONFLUENCES

Lycée Alain borne & Colegio
San Fernando

10 Mars 2026

MUR DES LYONNAIS

The wall of the lyonnais is a large fresco located in Lyon. It shows famous people from the city, like paul bocuse and Antoine de St Exupéry. it looks like a real building and celebrate the history of lyon. It was realised in 1994-1995 by Citécréation



Lycée Alain borne & Colegio
San Fernando

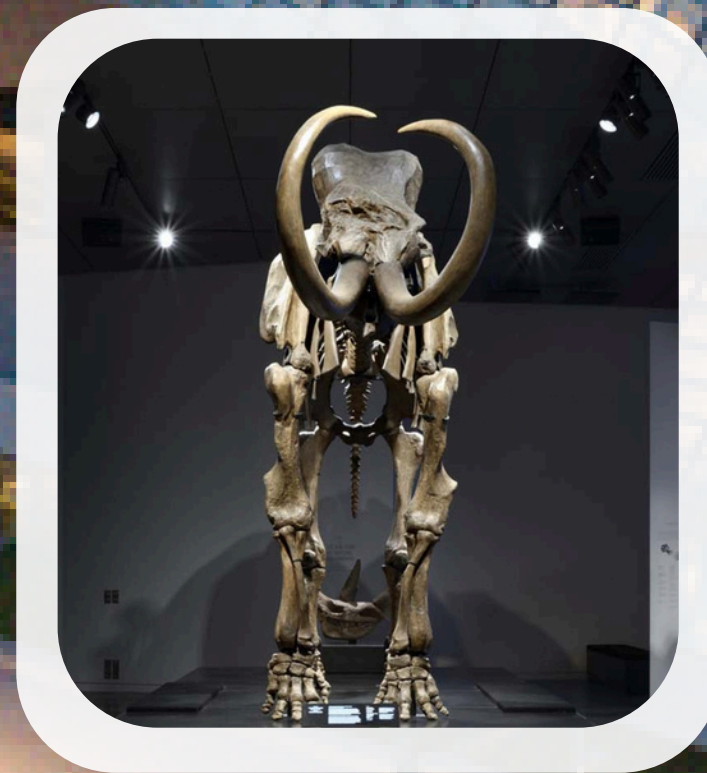
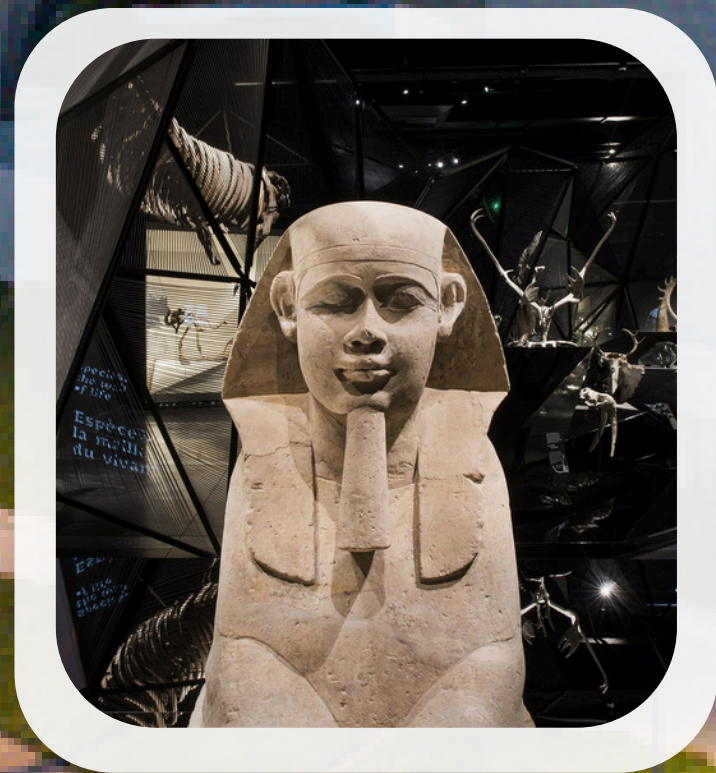
Presqu'île confluence

The presqu'île is the center of Lyon, between two rivers. It's a lively place with shops, restaurants, and beautiful streets. Many people come here to walk, shop and enjoy the atmosphere.

Lycée Alain borne & Colegio
San Fernando

MUSEE DES CONFLUENCES

The musée des Confluences is a modern museum in Lyon. It talks about science, history, and the world. The building is very original and looks like a big crystal. Many people visit it to learn and discover new things.



Lycée Alain Borne & Colegio San Fernando

VOYAGE EURO ANGLAIS

Thank You

Lycée Alain borne & Colegio
San Fernando

10 Mars 2026